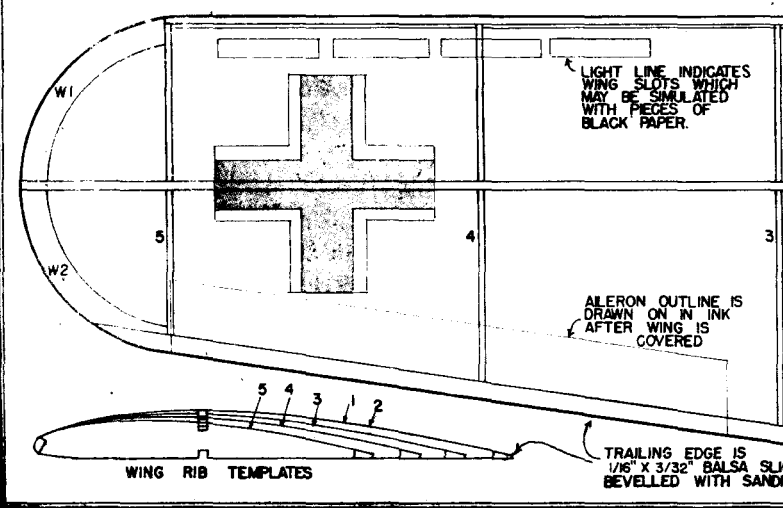


FRONT VIEW
ACTUAL SIZE

MEASURE YOUR DIHEDRAL FROM THIS VIEW. DIHEDRAL IS PUT INTO WING FRAME BEFORE COVERING AND BEFORE ASSEMBLING TO FUSELAGE.



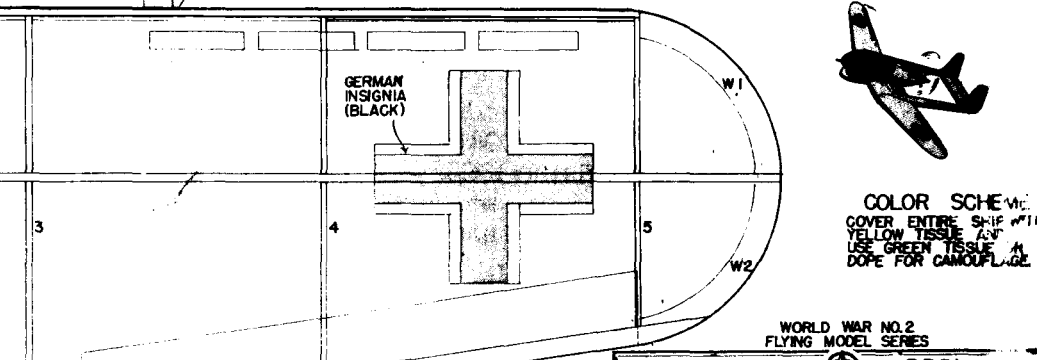
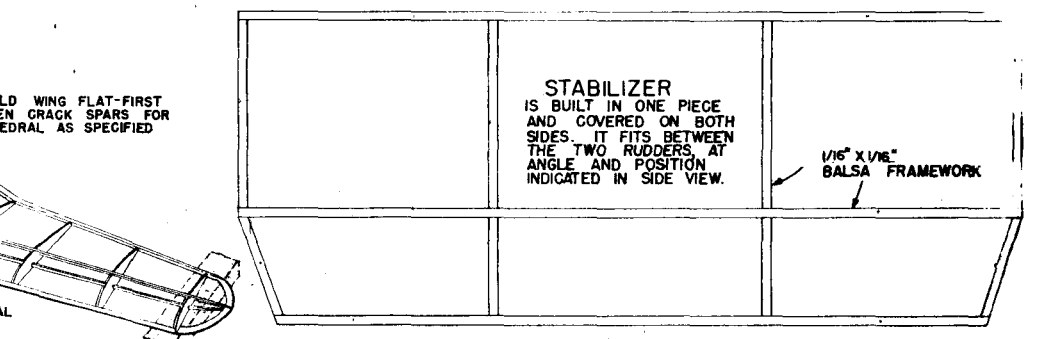
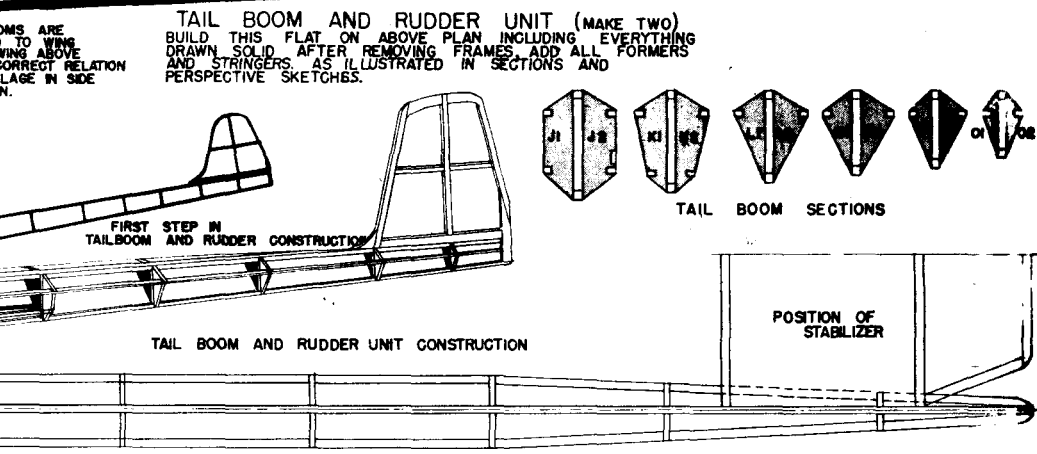
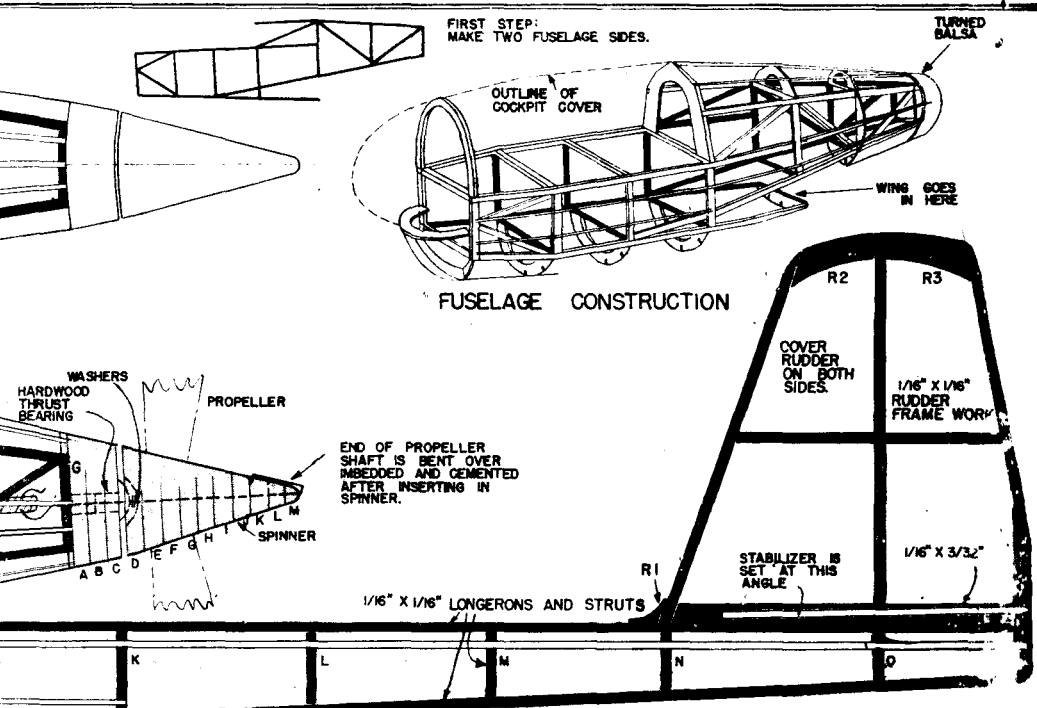
LIGHT LINE INDICATES WING SLOTS WHICH MAY BE SIMULATED WITH PIECES OF BLACK PAPER.

AILERON OUTLINE IS DRAWN ON INK AFTER WING IS COVERED

WING RIB TEMPLATES

TRAILING EDGE IS 1/16" X 3/32" BALSA SLIGHTLY BEVELLED WITH SANDPAPER

- GENERAL CONSTRUCTION NOTES**
- THE START:** The first step in building this model is to lay the drawing out flat on a work table, drawing board or plywood panel. Fasten it down with thumbtacks as illustrated and lay a sheet of wax paper over the entire plan to keep your work from adhering to it. Now study the entire plan carefully so that you are familiar with every part of this model, and will know what you are referring to in the outlined construction procedure that follows:
 - FIRST STEP:** Begin with the side view of the fuselage. Make two sides (ends) are already shown on this plan; by laying down the required amount of strip balsa, and holding them in place with pins. Then cut the cross pieces to length and fit them into position. Make top of these sides exact by plane. "True up" each side.
 - FUSELAGE:** The next operation is to assemble the two sides to form the fuselage. This time use the plan view or top view of the fuselage. On it measure the cross pieces which are clearly indicated and cut them to length. Set the two sides on edge on the plan and connect in place all the joints indicated by the special drawing illustrating this step. Run these joints dry, join the sides together at front and rear as required and fit in all the remaining cross pieces. Use thread or rubber bands, to keep the fuselage sides from springing apart in this operation. If the longerons make an angle at any point, such as rear end, you may break the glue member at the joints by firmly bending it between finger nail or by rubbing side your rear blade. Smoothly splice joints are specified, or else align them as they can be done by steaming. Check your fuselage if trueness.
 - FRONT AND TAIL:** If you have a front or rear fuselage, this must be done before the fuselage sides are attached to the frame by checking with the necessary fairing strips or connecting lines at the points in drawing. Make the nose about the shape indicated on this plan. Shape, nearly exact in plan.
 - TAIL ASSEMBLY:** The stabilizer is assembled separately in one piece, using the fuselage sides. Using special for spars and ribs, and the prepared parts. Balsa is used. Join parts are covered on both trailing to the model.
 - THE WING:** On the next page show the plan, or use the print out, and cut out the ribs (spars) and the edge of all the ribs (spars) all the notches are perfect. Building the wing in to lay you down, holding it in place with all your ribs against the fuselage. Use pins to hold the ribs in place. Use cement joints as dry. If you wish, to slip your center rib into place and sanding a drop of cement. Your tip outline may now be added.
 - ASSEMBLY:**
 - Cover the fuselage first with paper as light and smooth as possible to fasten paper to fuselage with your regular balsa small nails in covering near the rear to your rubber band motor.
 - Cover the wing and tail to keep paper flat and smooth.
 - Check that all the parts apply lines with a light spray of glue or a "fill" spray. Dry they will warp to a great extent that your frames may warp. Apply your wing and tail carefully to the fuselage. If necessary to pin these parts down from they are almost dry, do it true.
 - DO NOT ASSEMBLE:** all your parts specified by these plans, make sure the tail outline are correct and have the correct dihedral angle. Miscellaneous details and trim model is ready to fly.
 - TO FLY:** First release the center of the wing tips to the level position. If you are on front or rear which is the level position. If you are on top or bottom of the model, it will be level. Make adjustments as follows:
 - Align your propeller gently against the ground, push the model a few degrees "nose up" side gracefully to the level position. Make adjustments as follows: "tail heavy", bend the wing down. Make adjustments as follows: "nose heavy", bend the wing up. If you have had "nose heavy" or "tail heavy", bend the wing down. If you have had "tail heavy", bend the wing up. If you have had "nose heavy", bend the wing up. If you have had "tail heavy", bend the wing down.



STUDY THESE PLANS CAREFULLY BEFORE STARTING TO BUILD THIS MODEL. START WITH FUSELAGE AT STEP NO. 1

WORLD WAR NO. 2
FLYING MODEL SERIES

MEGOW MODEL

FOCKE - WULF - FW 198

GERMAN PURSUIT PLANE

15" FLYING MODEL DRAWING FULL SIZE

KIT NO. F62

2 X X